

WORKSHOP
APALACHICOLA CITY COMMISSION
TUESDAY, NOVEMBER 28, 2023 – 4:00PM
HOLY FAMILY CENTER
203 7TH STREET, APALACHICOLA, FLORIDA 32320

Agenda

You are welcome to comment on any matter under consideration by the Apalachicola City Commission when recognized to do so by the Mayor. Once recognized please rise to the podium, state your name for the record and adhere to the three minute time limit for public comment. Comments may also be sent by email to the City Manager or to Commissioners.

- I. Call to Order**
- II. Agenda Adoption**
- III. WORKSHOP – AFRICAN AMERICAN MUSEUM DISCUSSION**
- IV. Public Comment**
- V. Adjournment**

Any person who desires to appeal any decision at this meeting will need a record of the proceeding and for this purpose, may need to ensure that a verbatim record of the proceeding is made which includes testimony and evidence upon which the appeal is based. Persons with disabilities needing assistance to participate in any of these proceedings should contact the City Clerk's Office 48 hours in advance of the meeting.



AGENDA

DATE: 11/28/2023 @ 4:00 EST
TO: Kendall Falkner, Grant Coordinator
File
FROM: Bret D. Hammond, AIA, ASLA
RE: Apalachicola African American Museum

This will be a PowerPoint presentation to the City Commission, City Staff, Stakeholders and the Community at Large.

The purpose of our meeting for 11/28/2023 is as follows:

The intent is to show the process we have gone through to develop two site plan design options and floor plan studies for consideration by the City and Stakeholders;

The goal of this meeting is to reach consensus on one or a hybrid concept of the discussed options;

Additional discussion will focus on the exhibit space requirements, storage, materiality;

Connection and compatibility with the Holy Family structure will be addressed based on the selected concept or hybridized concept.

APALACHICOLA MUSEUM OF AFRICAN AMERICAN CULTURE AND HISTORY

Site and building program/concept meeting | 11.28.2023



APALACHICOLA, FLORIDA



rhodes + brito
ARCHITECTS

PROGRAMMING KICK-OFF
MEETING
11.20.2023
LICENSE NO.: AR0014284

PROJECT SCHEDULE

1. KICK-OFF MEETING	OCT. 5, 2023	✓
2. VIRTUAL PROGRAMMING/SITE PLANNING PRE-MEETING	NOV. 20, 2023	✓
3. IN-PERSON PUBLIC MEETING CONCEPT/SITE PLANNING/	NOV. 28, 2023	➤
4. IN-PERSON PUBLIC MEETING DESIGN CONCEPTS	JAN. 16, 2023	

APALACHICOLA MUSEUM OF AFRICAN AMERICAN CULTURE AND HISTORY | PROGRAM CONCEPTS



rhodes + brito
ARCHITECTS



APALACHICOLA, FLORIDA

PROGRAMMING KICK-OFF
MEETING
11.20.2023

AGENDA

1. PARKING
2. FINISH FLOOR ELEVATION STUDIES
3. OUTDOOR VENUE PRECEDENT IMAGERY
4. SITE PLANNING CONCEPTS
5. BUILDING PROGRAM
6. FLOOR PLAN CONCEPTS
7. LET'S TALK ABOUT EXHIBITION DISPLAY



APALACHICOLA, FLORIDA

APALACHICOLA MUSEUM OF AFRICAN AMERICAN CULTURE AND HISTORY | PROGRAM CONCEPTS

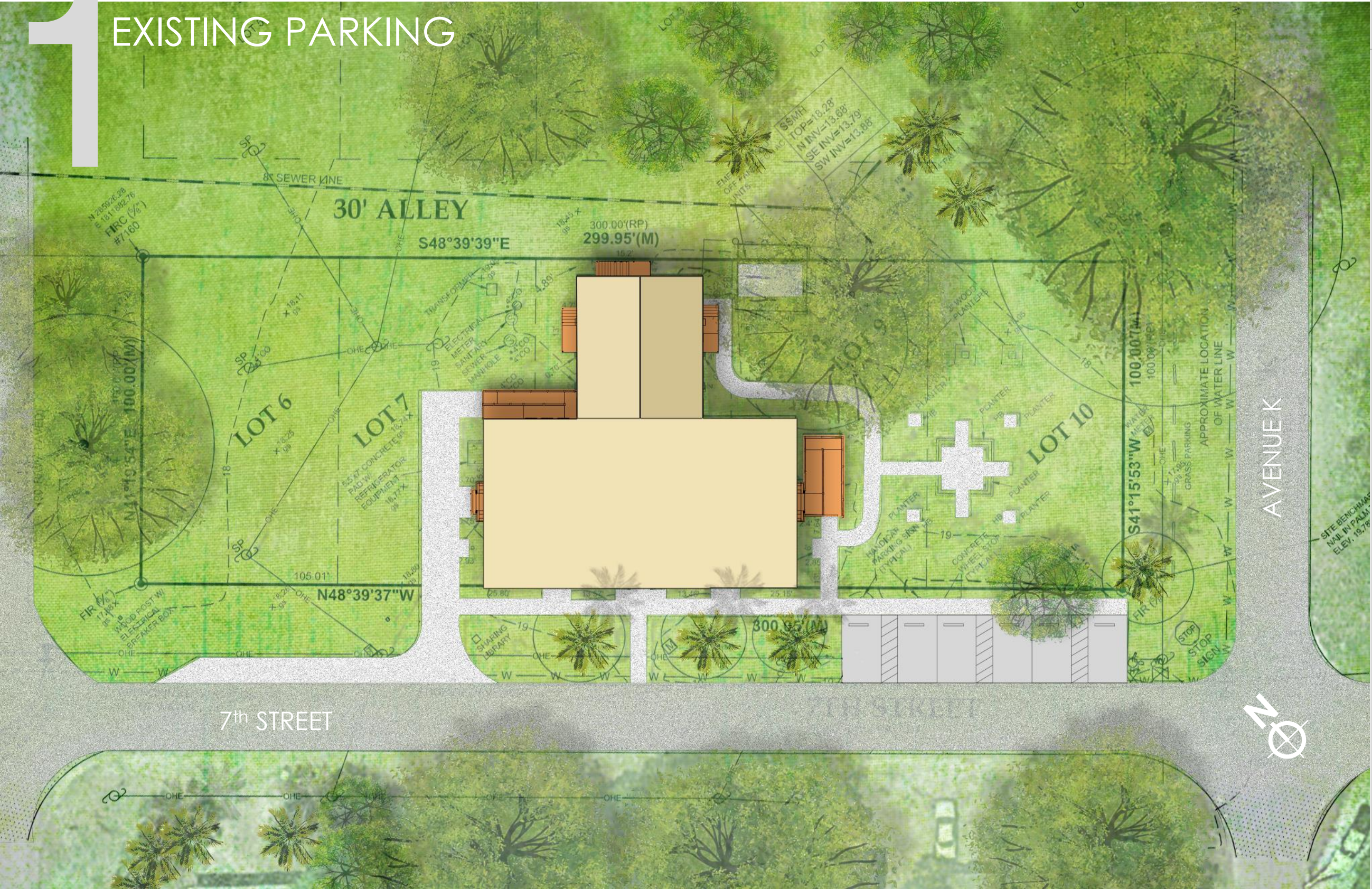


rhodes + brito
ARCHITECTS

PROGRAMMING KICK-OFF
MEETING
11.20.2023

1

EXISTING PARKING



EXISTING PARKING

- HOLY FAMILY –
6 H.C. PARKING SPACES

APALACHICOLA MUSEUM OF AFRICAN AMERICAN CULTURE AND HISTORY | PROGRAM CONCEPTS



rhodes + brito
ARCHITECTS

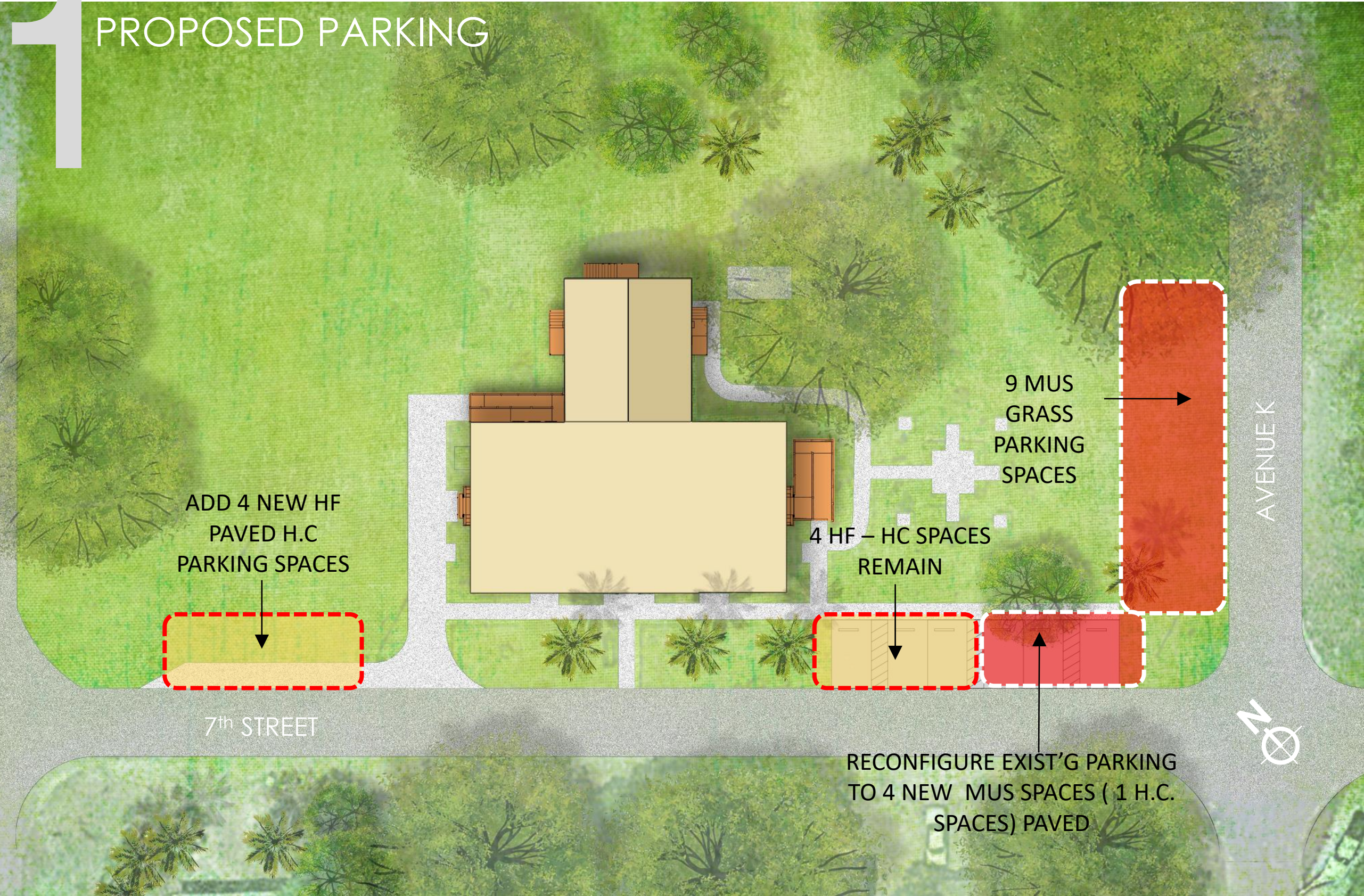


APALACHICOLA, FLORIDA

PROGRAMMING KICK-OFF
MEETING
11.20.2023

1

PROPOSED PARKING



PROPOSED PARKING

- MUSEUM PARKING SPACES – 13 TOTAL
- HOLY FAMILY – 8 H.C PARKING SPACES

APALACHICOLA MUSEUM OF AFRICAN AMERICAN CULTURE AND HISTORY | PROGRAM CONCEPTS



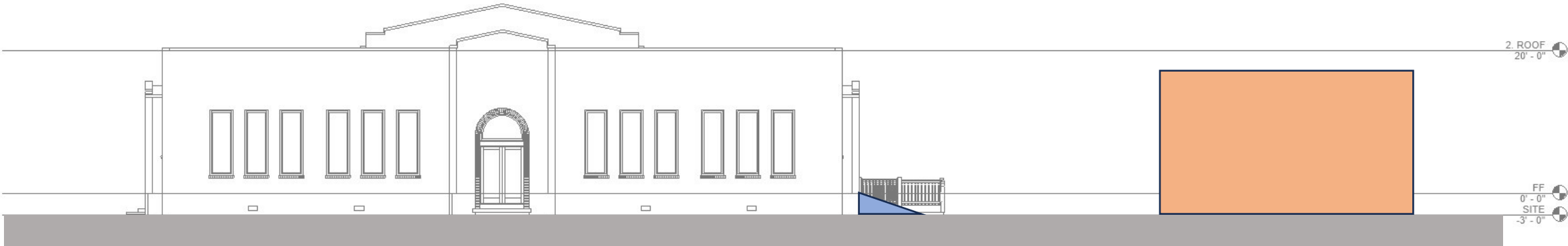
rhodes + brito
ARCHITECTS



APALACHICOLA, FLORIDA

PROGRAMMING KICK-OFF
MEETING
11.20.2023

2 FINISH FLOOR ELEVATION STUDY 1



FINISH FLOOR ELEV. STUDY

Not being in a flood zone allows museum to possibly be built using a slab on grade foundation.

This is the most economical option, but differs from the Holy Family Center, which is raised.

This creates two different finish floor elevations, which limits connection between them and potentially changes the architectural relationship between them.

APALACHICOLA MUSEUM OF AFRICAN AMERICAN CULTURE AND HISTORY | PROGRAM CONCEPTS



rhodes + brito
ARCHITECTS

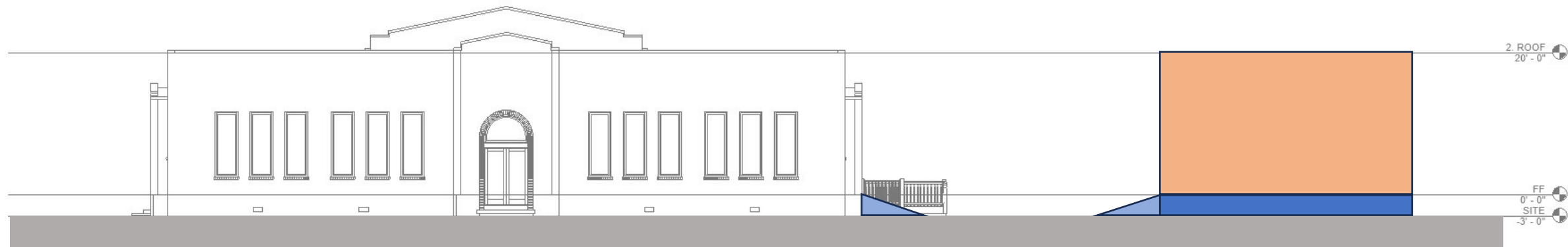


APALACHICOLA, FLORIDA

PROGRAMMING KICK-OFF
MEETING
11.20.2023

2

FINISH FLOOR ELEVATION STUDY 2



FINISH FLOOR ELEV. STUDY

Another option would be to raise the finish floor elevation of the new building to match the existing Holy Family building.

This could be achieved through foundation walls and fill or piers,

This will increase construction costs and will require the need for at least two ramps, which take up space in areas that could be used for courtyards and terraces.

APALACHICOLA MUSEUM OF AFRICAN AMERICAN CULTURE AND HISTORY | PROGRAM CONCEPTS



rhodes + brito
ARCHITECTS

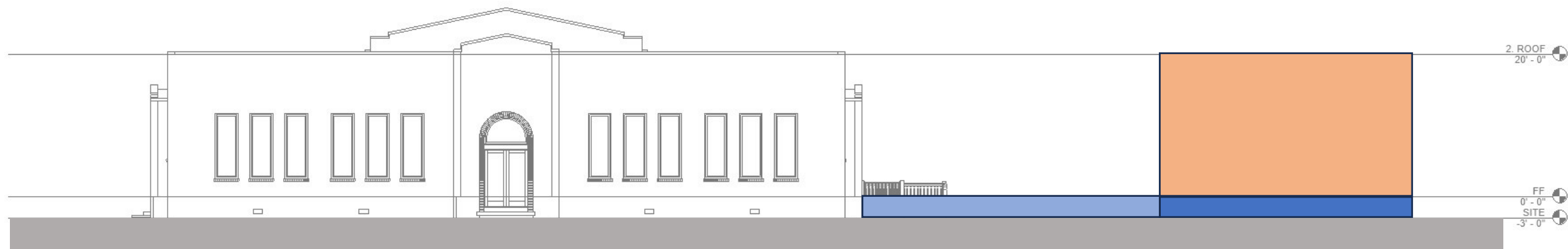


APALACHICOLA, FLORIDA

PROGRAMMING KICK-OFF
MEETING
11.20.2023

2

FINISH FLOOR ELEVATION STUDY 3



FINISH FLOOR ELEV. STUDY

Connecting the buildings at the same height using a raised patio or a deck creates the most integrated feel and necessitates only one ramp, which can be used as an architecturally prominent feature and shared between the structures.

This is perhaps the most architecturally interesting concept but is also the most expensive option.



APALACHICOLA, FLORIDA

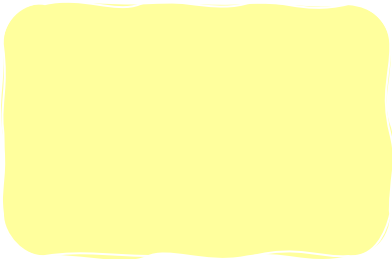
APALACHICOLA MUSEUM OF AFRICAN AMERICAN CULTURE AND HISTORY | PROGRAM CONCEPTS



rhodes + brito
ARCHITECTS

PROGRAMMING KICK-OFF
MEETING
11.20.2023

3 OUTDOOR SITE PRECEDENT IMAGES



PRIVATE COURTYARD

PROVIDES INTIMATE SPACE FOR OUTDOOR EXHIBITS, PERFORMANCES, AND GATHERINGS



OUTDOOR EVENT SPACE

PROVIDES SPACE FOR LARGER OUTDOOR EVENTS SUCH AS WEDDINGS OR REUNIONS



PUBLIC COURTYARD/ ENTRY

PROVIDES WELCOMING SPACE AS ONE APPROACHES, ABLE TO GATHER BEFORE EVENTS START



PUBLIC/PRIVATE SEPARATION

COMBINATION OF ARCHITECTURAL/ LANDSCAPE ELEMENTS TO BOTH SHOW AND HIDE VARIOUS ASPECTS OF THE PROGRAM

APALACHICOLA MUSEUM OF AFRICAN AMERICAN CULTURE AND HISTORY | PROGRAM CONCEPTS



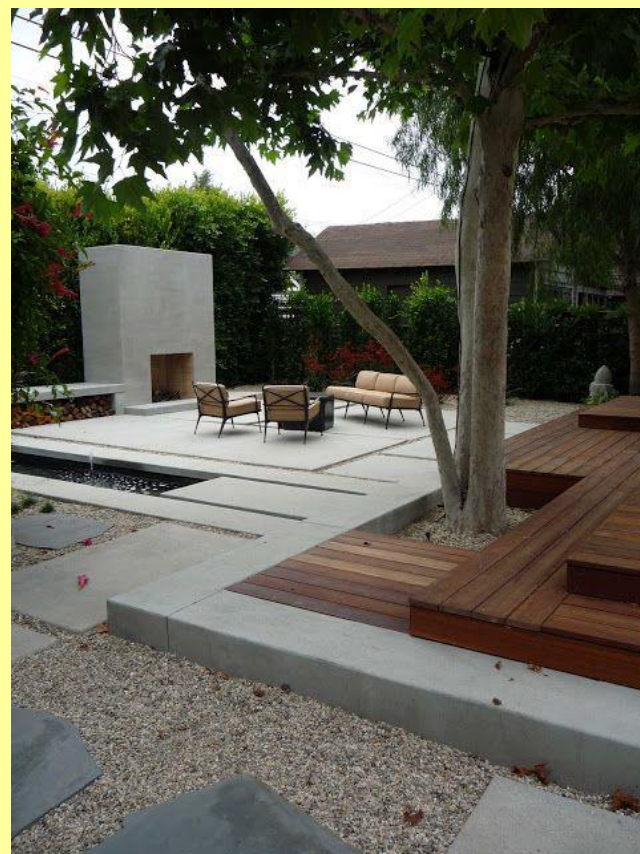
rhodes + brito
ARCHITECTS



APALACHICOLA, FLORIDA

PROGRAMMING KICK-OFF
MEETING
11.20.2023

3 OUTDOOR SITE PRECEDENT IMAGES



PRIVATE COURTYARD PRECEDENT IMAGRY

PROVIDES INTIMATE SPACE FOR OUTDOOR EXHIBITS, PERFORMANCES, AND GATHERINGSEXHIBITS



PRIVATE COURTYARD



OUTDOOR EVENT SPACE



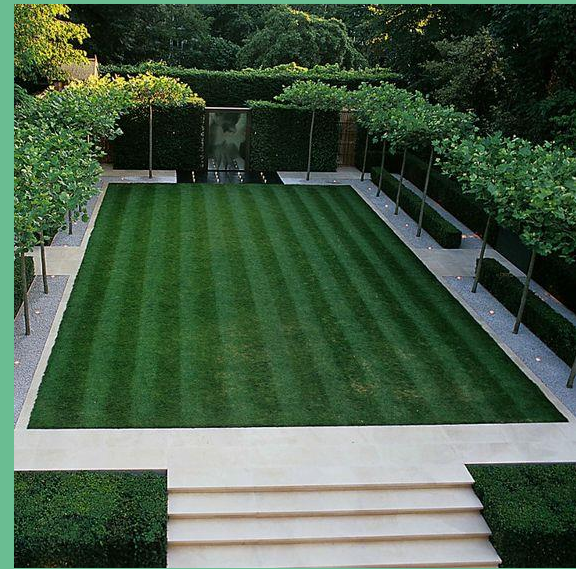
PUBLIC COURTYARD/ ENTRY



APALACHICOLA, FLORIDA

APALACHICOLA MUSEUM OF AFRICAN AMERICAN CULTURE AND HISTORY | PROGRAM CONCEPTS

3 OUTDOOR SITE PRECEDENT IMAGES



OUTDOOR EVENT SPACE PRECEDENT IMAGRY

PROVIDES SPACE FOR LARGER OUTDOOR EVENTS SUCH AS WEDDINGS OR REUNIONS



PRIVATE COURTYARD



OUTDOOR EVENT SPACE



PUBLIC COURTYARD/ ENTRY



APALACHICOLA, FLORIDA

APALACHICOLA MUSEUM OF AFRICAN AMERICAN CULTURE AND HISTORY | PROGRAM CONCEPTS

3 OUTDOOR SITE PRECEDENT IMAGES

PUBLIC COURTYARD / ENTRY PRECEDENT IMAGES

PROVIDES WELCOMING SPACE AS ONE APPROACHES,

SERVES AS A PRE-FUNCTION SPACE

 PRIVATE COURTYARD

 OUTDOOR EVENT SPACE

 PUBLIC COURTYARD/ ENTRY



APALACHICOLA, FLORIDA

PROGRAMMING KICK-OFF MEETING
11.20.2023



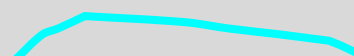
APALACHICOLA MUSEUM OF AFRICAN AMERICAN CULTURE AND HISTORY | PROGRAM CONCEPTS

3 OUTDOOR SITE PRECEDENT IMAGES



PRIVACY SEPARATOR (FENCING)

OPTIONS FOR DEFINING SPACE AND ESTABLISHING BOUNDARIES AND PRIVACY FOR THOSE SPECIAL EVENTS



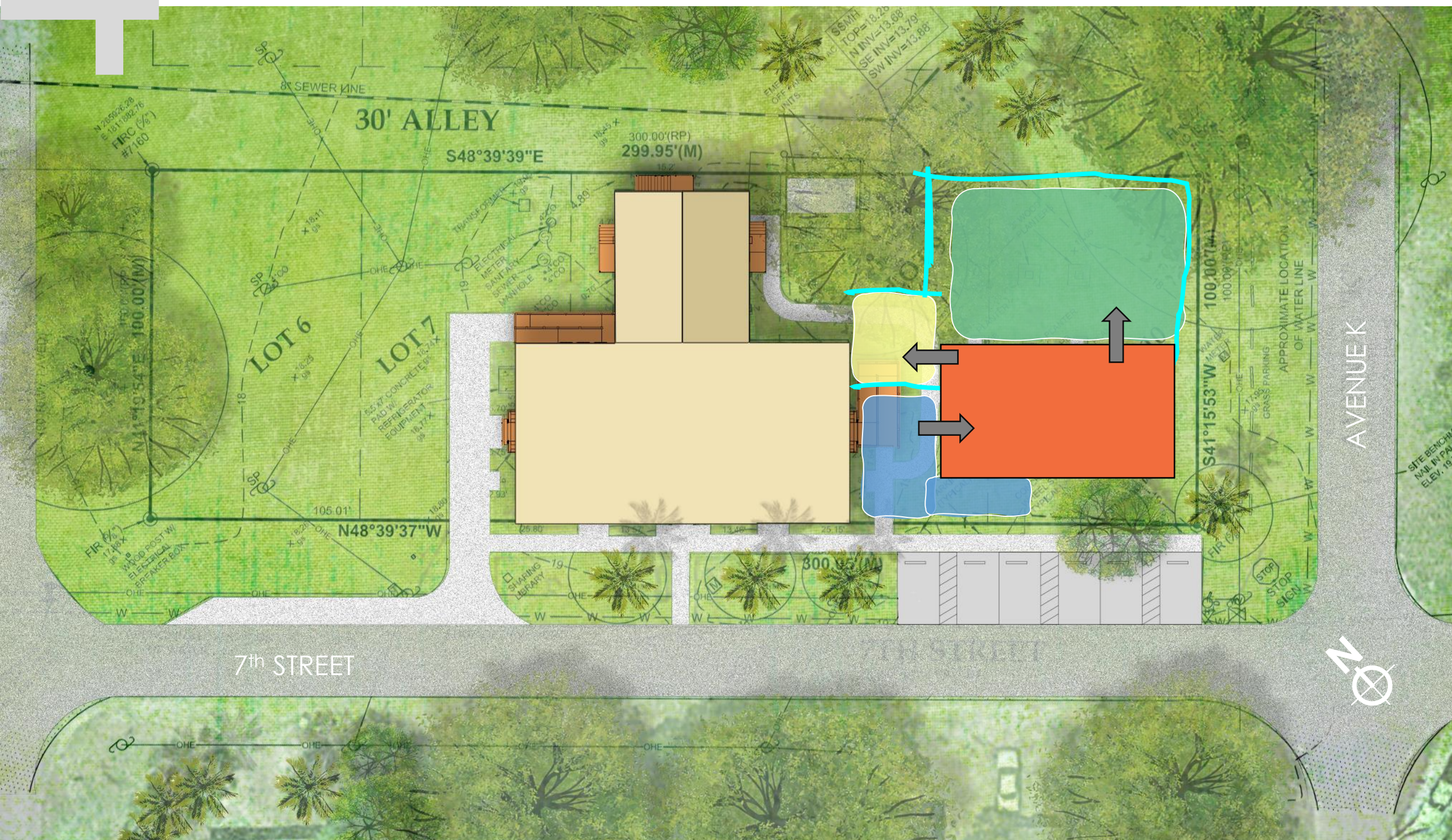
PUBLIC/PRIVATE SEPARATION








APALACHICOLA, FLORIDA

APALACHICOLA MUSEUM OF AFRICAN AMERICAN CULTURE AND HISTORY | PROGRAM CONCEPTS

4 SITE PLANNING CONCEPTS A



SITE LAYOUT A

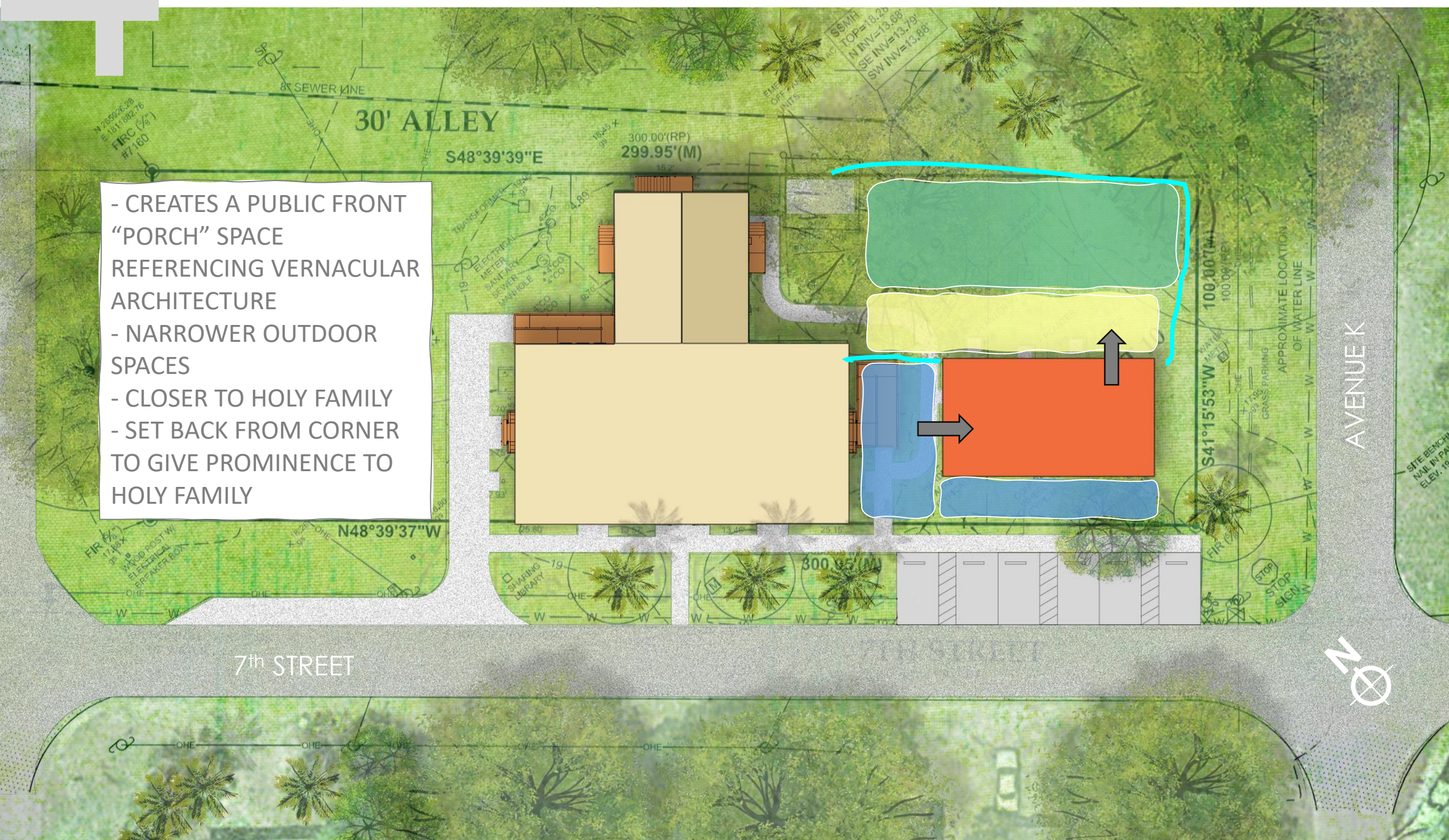
-  PRIVATE COURTYARD
-  OUTDOOR EVENT SPACE
-  PUBLIC COURTYARD/ ENTRY
-  PROPOSED MUSEUM BUILDING
-  PUBLIC/PRIVATE SEPARATION



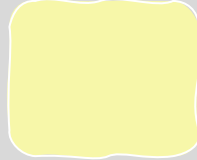




APALACHICOLA, FLORIDA

APALACHICOLA MUSEUM OF AFRICAN AMERICAN CULTURE AND HISTORY | PROGRAM CONCEPTS

4 SITE PLANNING CONCEPTS B



SITE LAYOUT B

-  PRIVATE COURTYARD
-  OUTDOOR EVENT SPACE
-  PUBLIC COURTYARD/ ENTRY
-  PROPOSED MUSEUM BUILDING
-  PUBLIC/PRIVATE SEPARATION








APALACHICOLA, FLORIDA

APALACHICOLA MUSEUM OF AFRICAN AMERICAN CULTURE AND HISTORY | PROGRAM CONCEPTS

4 SITE PLANNING CONCEPTS B



SITE LAYOUT C

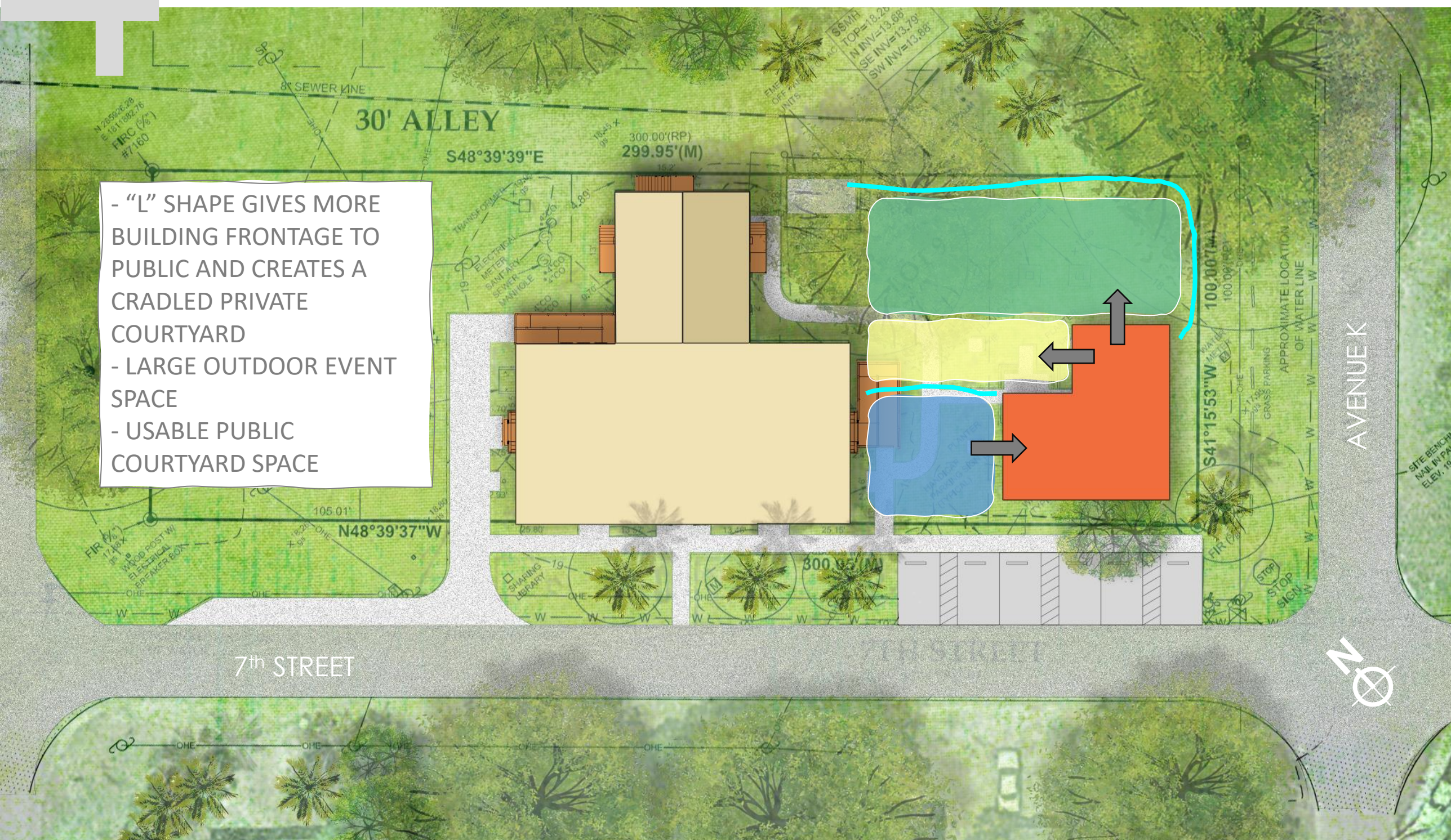
-  PRIVATE COURTYARD
-  OUTDOOR EVENT SPACE
-  PUBLIC COURTYARD/ENTRY
-  PROPOSED MUSEUM BUILDING
-  PUBLIC/PRIVATE SEPARATION



APALACHICOLA, FLORIDA






APALACHICOLA MUSEUM OF AFRICAN AMERICAN CULTURE AND HISTORY | PROGRAM CONCEPTS

4 OUTDOOR SITE PRECEDENT IMAGES



- "L" SHAPE GIVES MORE BUILDING FRONTAGE TO PUBLIC AND CREATES A CRADLED PRIVATE COURTYARD
- LARGE OUTDOOR EVENT SPACE
- USABLE PUBLIC COURTYARD SPACE

SITE LAYOUT D

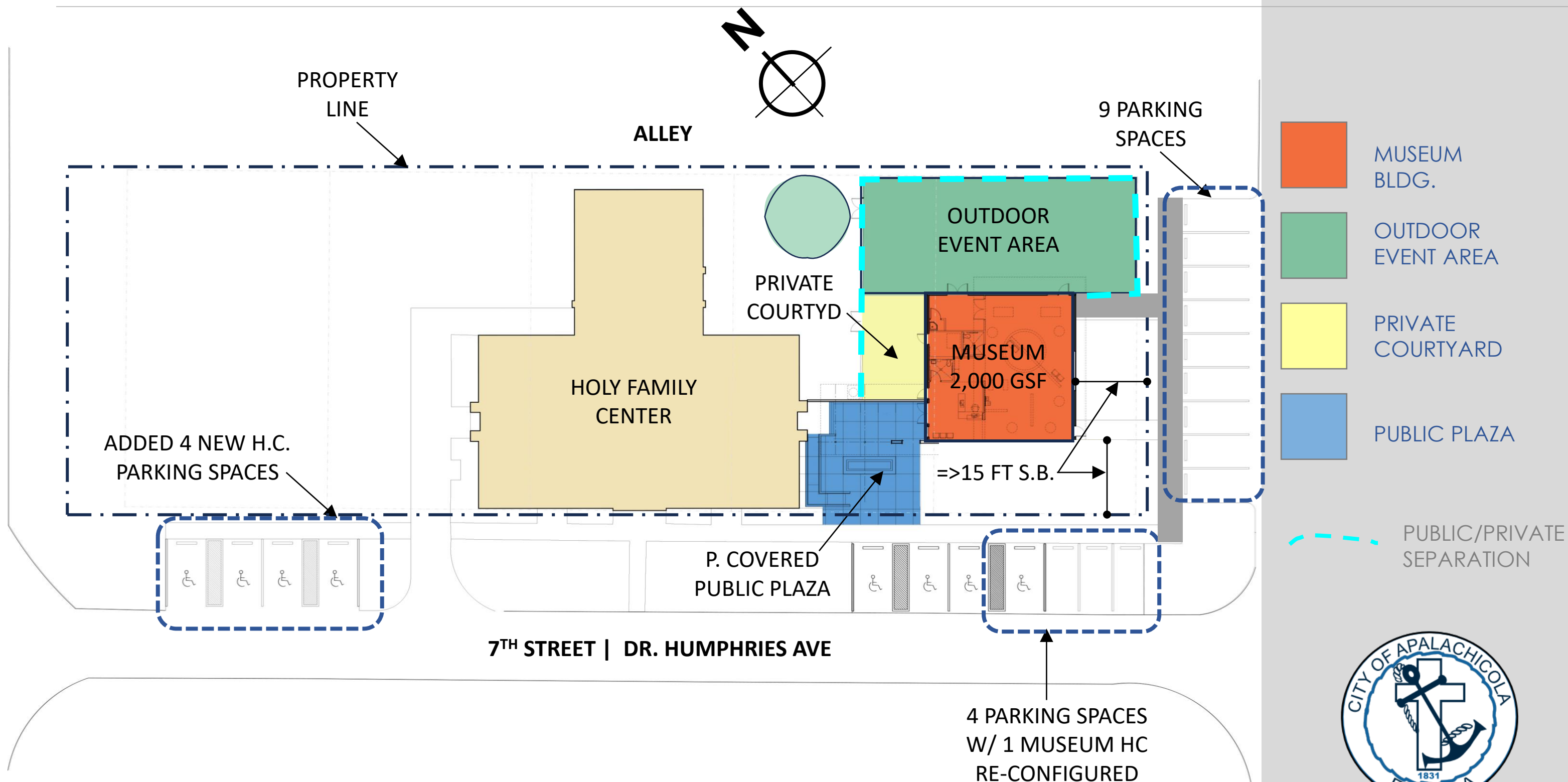
-  PRIVATE COURTYARD
-  OUTDOOR EVENT SPACE
-  PUBLIC COURTYARD/ENTRY
-  PROPOSED MUSEUM BUILDING
-  PUBLIC/PRIVATE SEPARATION



APALACHICOLA, FLORIDA

APALACHICOLA MUSEUM OF AFRICAN AMERICAN CULTURE AND HISTORY | PROGRAM CONCEPTS

CONCEPT SITE PLAN



APALACHICOLA MUSEUM OF AFRICAN AMERICAN CULTURE AND HISTORY | PROGRAM CONCEPTS

5 BUILDING PROGRAM



**LOBBY/
RECEPTION**

PROVIDES A WELCOMING AND VISUALLY APPEALING FIRST IMPRESSION, A PLACE FOR A RECEPTION DESK, AND SPACE FOR SHOP ITEMS



STORAGE

PROVIDES ON-SITE SPACE FOR EXHIBIT STORAGE



RESTROOMS

PROVIDES A CONVENIENT AND ACCESIBLE SERVICE TO VISITORS



EXHIBIT SPACE

PROVIDES SPACE FOR TEMPORARY AND PERMAMENT EXIBITS, A/V CAPABILITIES, AND CONVERTABILITY



**COVERED
EXTERIOR
GATHERING**

PROVIDES EXTRA SPACE FOR OUTDOOR EXIBITS, EVENTS, AND SOCIAL INTERACTION



SERVICE

PROVIDES SPACE FOR JANITOR'S CLOSET, MECHANICAL, AND ELECTRICAL EQUIPMENT

APALACHICOLA MUSEUM OF AFRICAN AMERICAN CULTURE AND HISTORY | PROGRAM CONCEPTS



rhodes + brito
ARCHITECTS



APALACHICOLA, FLORIDA

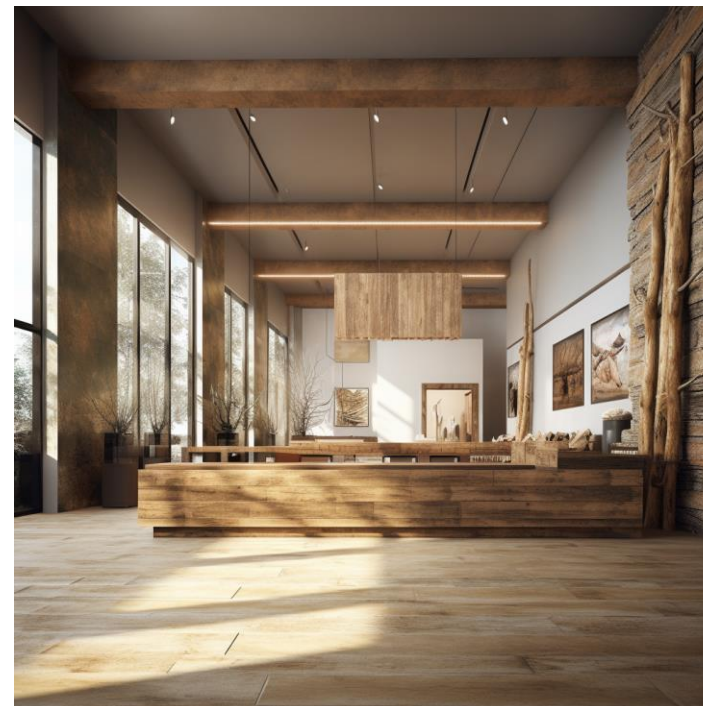
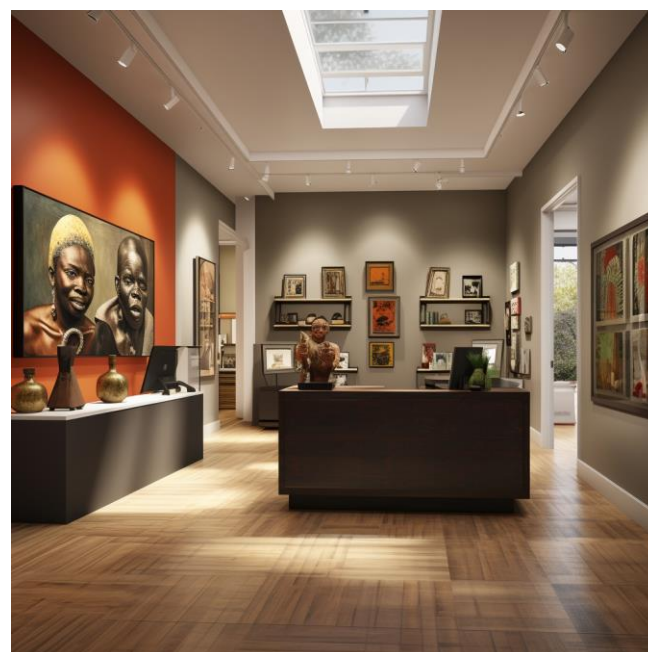
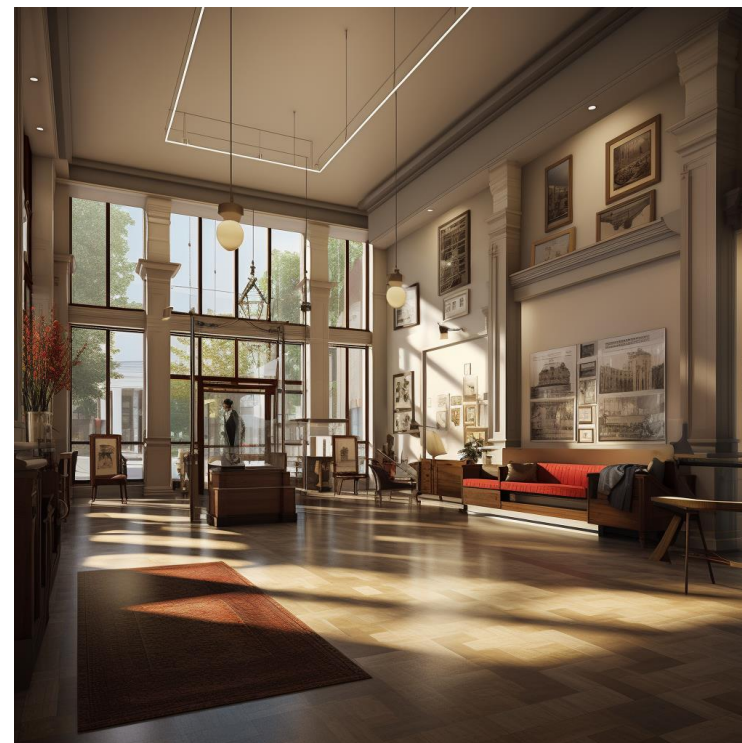
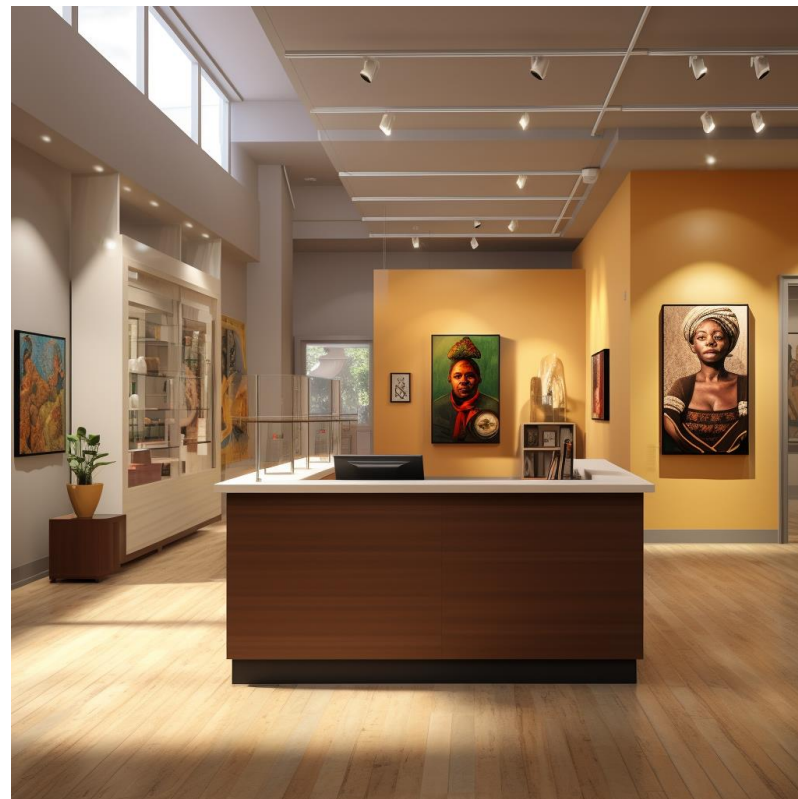
PROGRAMMING KICK-OFF
MEETING
11.20.2023

BUILDING PROGRAM

LOBBY/ RECEPTION

120-300 SF

PROVIDES A
WELCOMING AND
VISUALLY APPEALING
FIRST IMPRESSION, A
PLACE FOR A
RECEPTION DESK, AND
SPACE FOR SHOP ITEMS



LOBBY/ RECEPTION



APALACHICOLA, FLORIDA

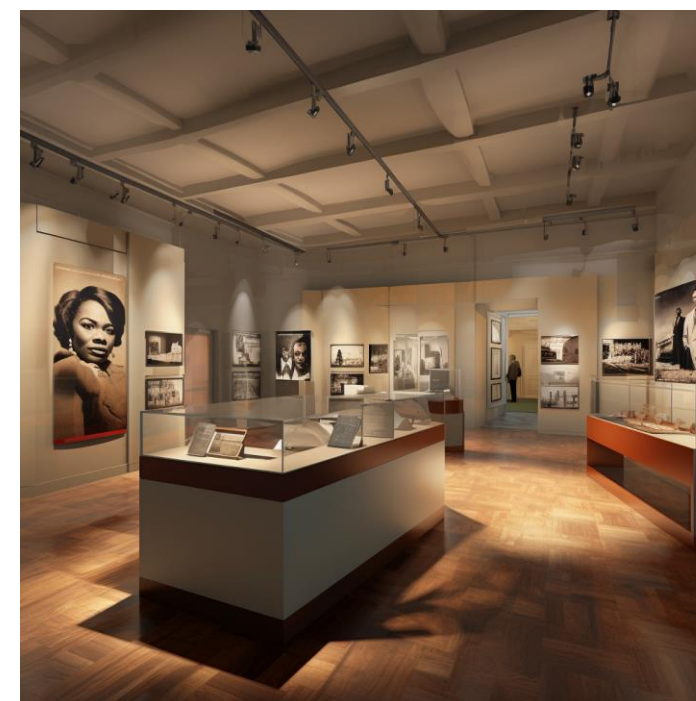
APALACHICOLA MUSEUM OF AFRICAN AMERICAN CULTURE AND HISTORY | PROGRAM CONCEPTS

BUILDING PROGRAM

EXHIBIT SPACE



EXHIBIT SPACE



MAXIMUM SF LEFT IN PROGRAM

PROVIDES SPACE FOR TEMPORARY AND PERMANENT EXHIBITS, A/V CAPABILITIES, AND CONVERTABILITY

APALACHICOLA MUSEUM OF AFRICAN AMERICAN CULTURE AND HISTORY | PROGRAM CONCEPTS



APALACHICOLA, FLORIDA



rhodes + brito
ARCHITECTS

PROGRAMMING KICK-OFF
MEETING
11.20.2023

5 BUILDING PROGRAM



COVERED EXTERIOR GATHERING

PROVIDES EXTRA SPACE FOR OUTDOOR EXHIBITS, EVENTS, AND SOCIAL INTERACTION



COVERED EXTERIOR GATHERING



APALACHICOLA, FLORIDA

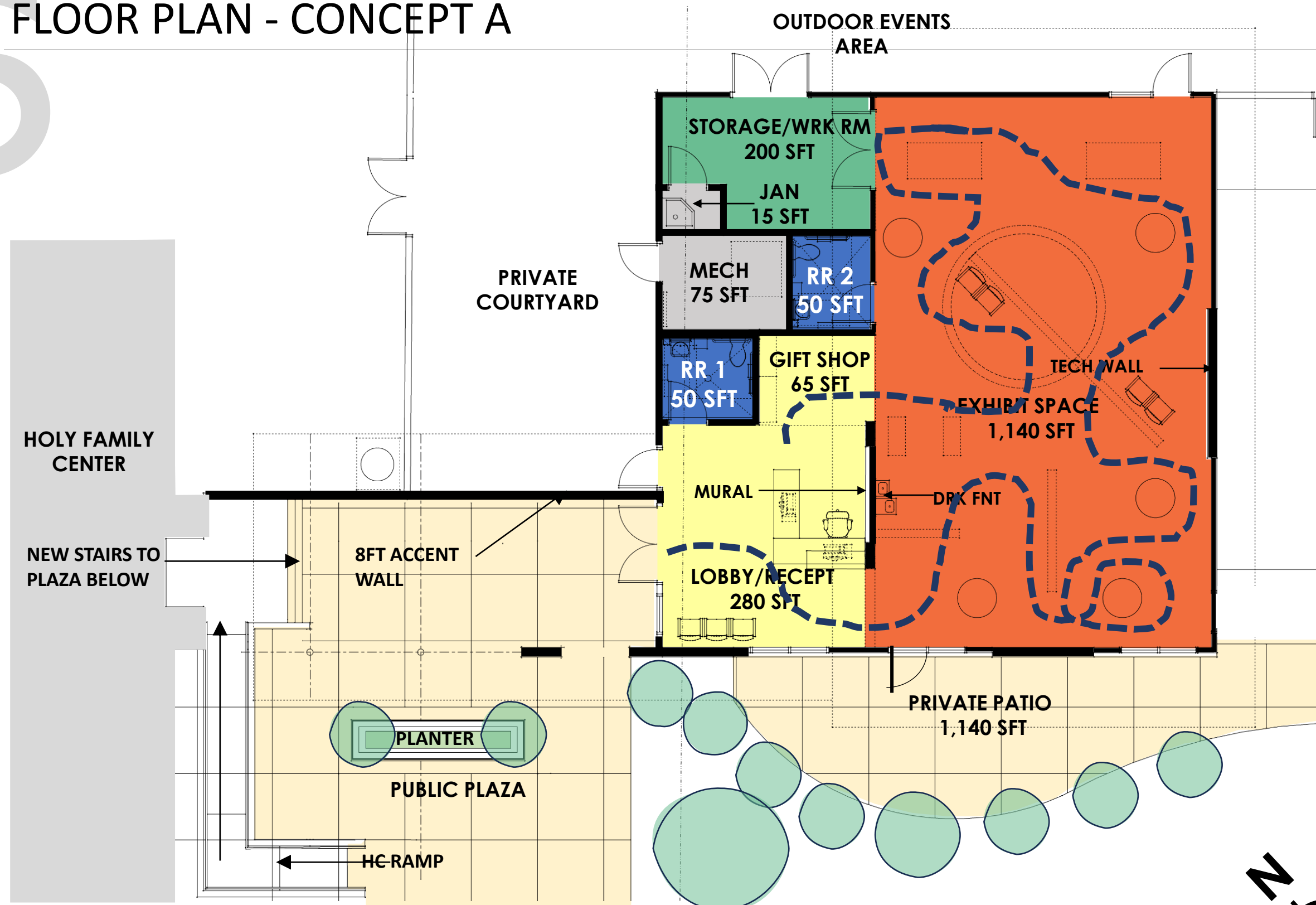
APALACHICOLA MUSEUM OF AFRICAN AMERICAN CULTURE AND HISTORY | PROGRAM CONCEPTS



rhodes + brito
ARCHITECTS

PROGRAMMING KICK-OFF
MEETING
11.20.2023

FLOOR PLAN - CONCEPT A



CONCEPT A TOTAL GSFT

TOTAL GSFT: 1,935

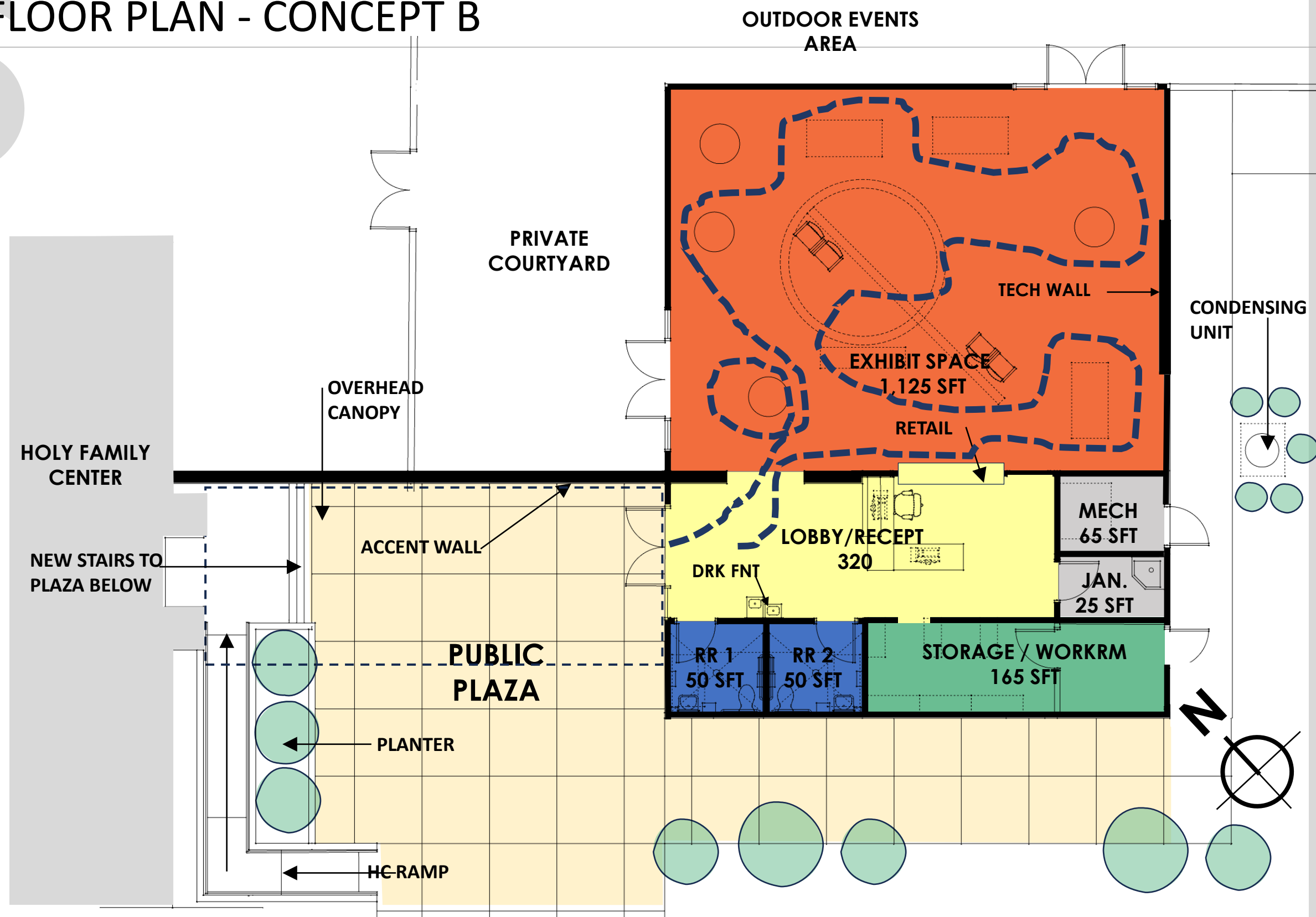
- ✓ THE EXHIBITION GALLERY IS LOCATED TO THE EAST.
- ✓ LOBBY ENTRANCE IS LOCATED ACROSS FROM THE HF EAST ENTRANCE/EXIT
- ✓ 2 UNI-SEX RESTROOMS
- ✓ GIFT SHOP
- ✓ MURAL ON WALL AT ENTRANCE
- ✓ PLANTERS AND SEATING AT PUBLIC PLAZA



APALACHICOLA, FLORIDA

APALACHICOLA MUSEUM OF AFRICAN AMERICAN CULTURE AND HISTORY | PROGRAM CONCEPTS

FLOOR PLAN - CONCEPT B



CONCEPT B TOTAL GSFT

TOTAL GSFT: 1,915

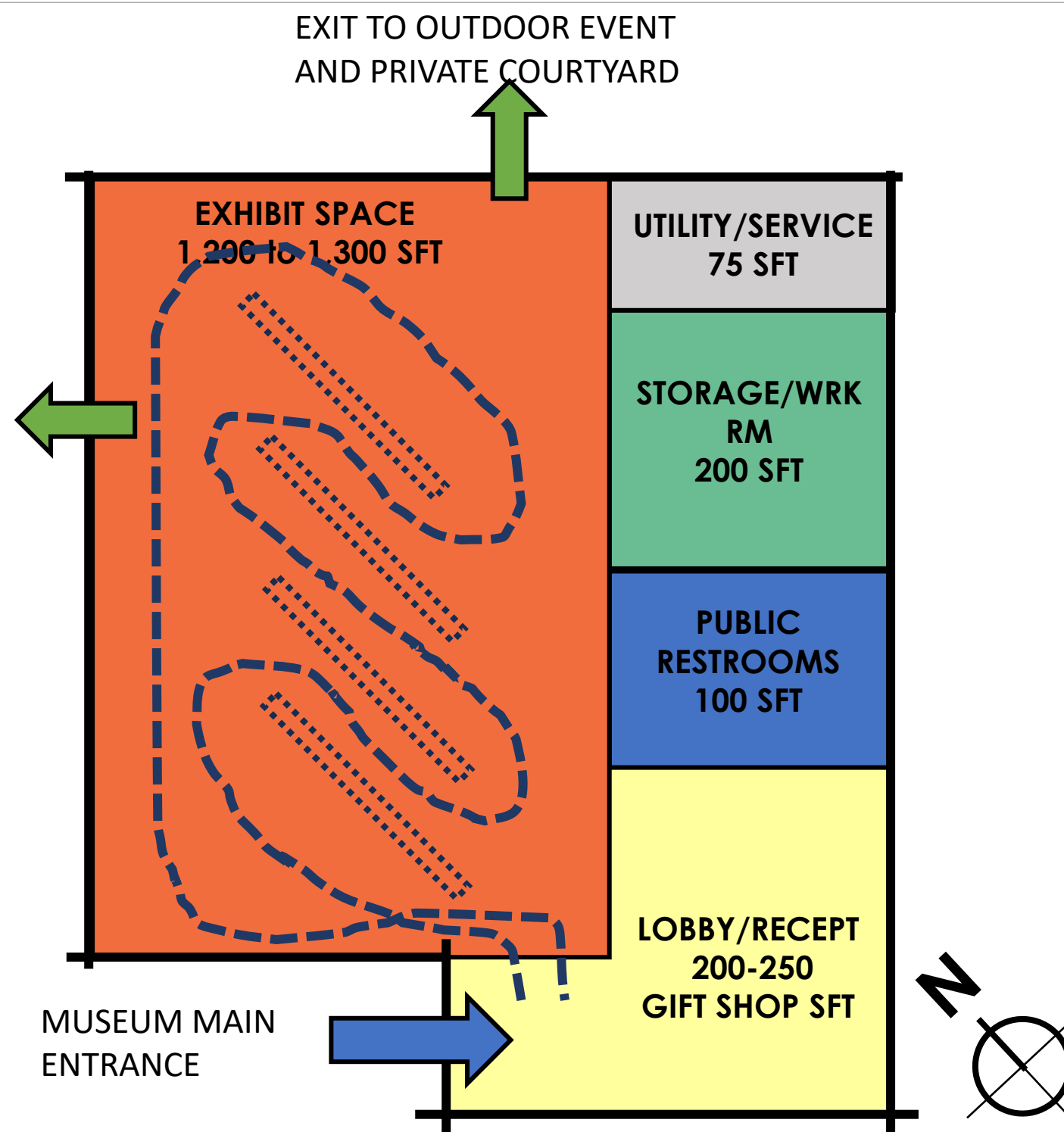
- ✓ THE EXHIBITION GALLERY IS LOCATED TO THE NORTH.
- ✓ LOBBY ENTRANCE IS LOCATED ACROSS FROM THE HF EAST ENTRANCE/EXIT
- ✓ 2 UNI-SEX RESTROOMS
- ✓ SUPPORT SPACES TO THE SOUTH
- ✓ PLANTERS AND SEATING AT PUBLIC PLAZA



APALACHICOLA, FLORIDA

APALACHICOLA MUSEUM OF AFRICAN AMERICAN CULTURE AND HISTORY | PROGRAM CONCEPTS

FLOOR PLAN - CONCEPT C



CONCEPT C TOTAL GSFT

TOTAL GSFT: 2,045

- ✓ THE EXHIBITION GALLERY IS LOCATED TO THE WEST.
- ✓ LOBBY ENTRANCE IS TO THE SOUTH
- ✓ 2 UNI-SEX RESTROOMS
- ✓ SUPPORT SPACES TO THE EAST



APALACHICOLA, FLORIDA

APALACHICOLA MUSEUM OF AFRICAN AMERICAN CULTURE AND HISTORY | PROGRAM CONCEPTS

EXHIBITION DISPLAY DESIGN

- 1. Is it the expectation that visitors will have a self-guided tour of the displays or exhibits, or will staff communicate with the visitors directly?
- 2. What type of exhibits will be on display in this facility?

EXHIBIT TYPE	YES	NO
a. Art Work - Visual	[]	[]
b. Sculpture / Artifact	[]	[]
c. Kiosk/Computer	[]	[]
d. Traveling Exhibit	[]	[]
e. Interactive Monitor	[]	[]
f. Video Projection	[]	[]

EXHIBITION

MEN OF CHANGE: POWER. TRIUMPH. TRUTH. is an immersive experience; exhibition as installation art. A script that uses the poetics of language integrated with a modern design informed by “visible and invisible men” to tell stories of historical, cultural, political, and creative ideals – all relevant to the dialogue of now.

In heralding the achievements of notable African American men from across the decades, *MEN OF CHANGE* highlight deep parallels between the past and present. While they made their mark in a variety of fields of human endeavor—politics, sports, science, entertainment, business, religion, and more—all understood the value of asserting their own agency by owning their own stories.

As you walk through this exhibition you will encounter a world of men, women, and communities that affirm the power of the African American journey and, ultimately, the American experience. This journey is what shaped these “MEN OF CHANGE” and what will form the change agents of the future. In them we see a lesson for us all, no matter our gender, age, or ethnicity. In them we see supreme ideals and a well of inspiration that encourage us to become our best selves.

EXHIBITION AT A GLANCE

- 3,500 square feet
- Security Level: High
- 60 crates
- Booking Period: 12 weeks
- Participation fee includes shipping

EXHIBITION CONTENTS

- 24 works of original art including painting, sculpture, photography, and video art
- Free-standing exhibit structure
- 130 light box panels for text and graphics: 7'x1', 3'x2', 4'x2' or 7'x4'
- Projections requiring display on 14' high wall or screen

A COMPLETE PACKAGE

The exhibition itself is only a portion of what SITE60 delivers. As a host of MEN OF CHANGE you will also receive:

- Complete curatorial and registration information
- Complete shipping, handling, and installation instructions
- Wall-to-wall fine-arts insurance coverage under the Smithsonian's policy
- Public relations support, including sample press release, images, logos, digital graphic templates of promotional materials; and advice on promoting the exhibition and hosting special events
- Educational and community outreach components to help engage local communities, including sponsor funded support
- Opportunity to engage with Sponsor's community outreach initiative

EXHIBITION REQUIREMENTS

This exhibition will be offered to institutions able to meet the following requirements:

- Exhibit space must meet stringent light, temperature and humidity requirements (foot candles: 20, 60-75 degrees F, 45-50% RH)
- Ceiling height: 15' with options for 11' 6" ceiling height
- Empty crates must be stored in a secure, indoor, pest-free storage area
- Multiple electrical outlets in gallery space (ceiling/floor)
- Supervision must be by two guards (one stationary in the display space and one patrolling the facility)
- When the exhibition is closed, 24-hour fire suppression and electronic monitoring are required
- Four museum handlers needed for installation

TO BOOK SHOW, CONTACT:

Ed Liskey
Scheduling and Exhibitor Relations
202.693.9142
eliskey@si.edu

FOR CONTENT & DESIGN, CONTACT:

Marquette Foley
Project Director
202.693.9111
foley@si.edu

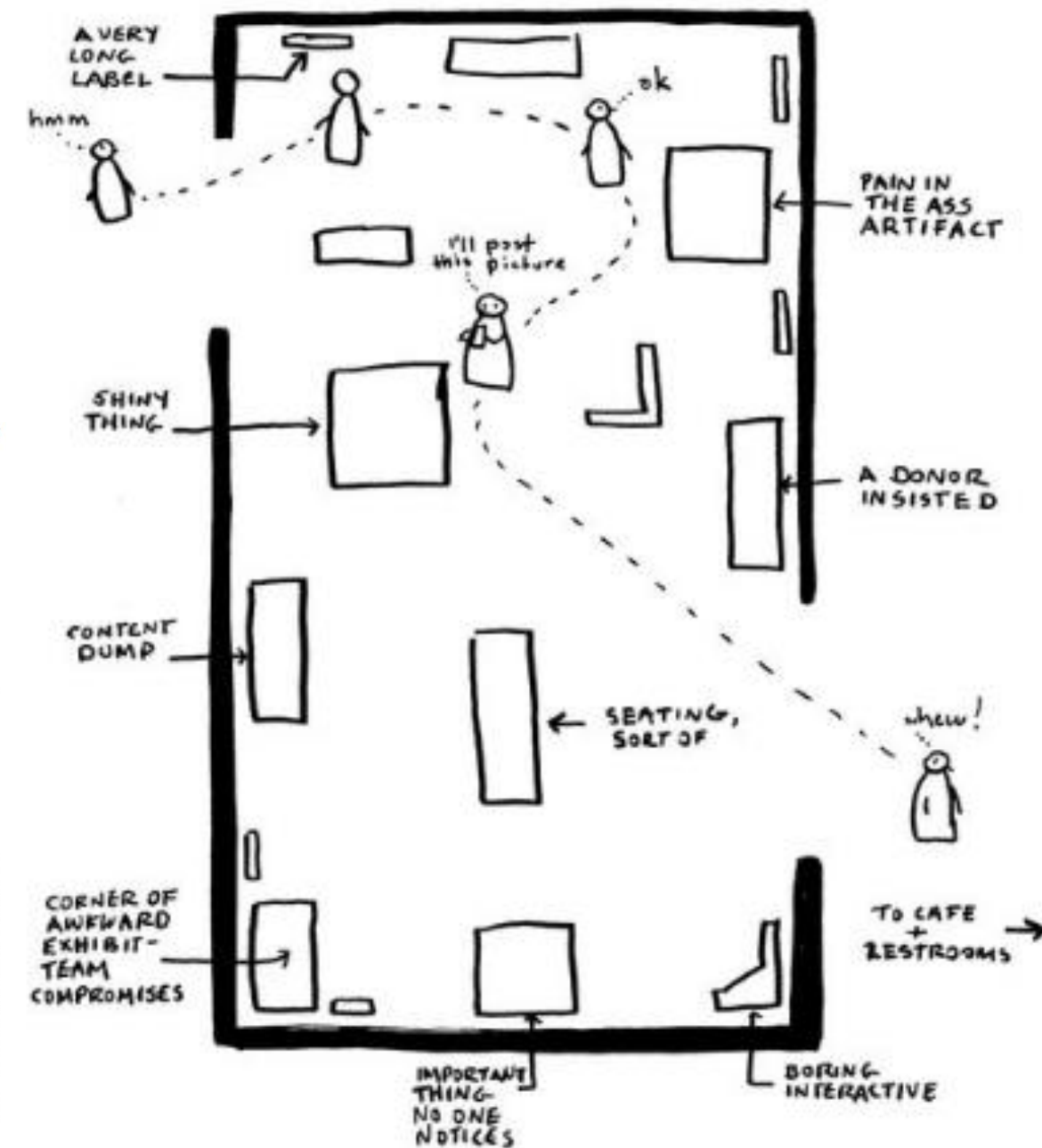
P16



P17

WHOEVER THEY ARE, VISITORS DO WHATEVER THEY WANT IN EXHIBITS. YOU HAVE TO EARN THEIR ATTENTION. SADLY, A LOT OF EXHIBITS AREN'T TRYING TO ENGAGE VISITORS MUCH AT ALL, UNLESS THEY'RE ENTHUSIASTS.

A TYPICAL EXHIBIT EXPERIENCE



EXHIBITION DISPLAY

- ✓ THERE ARE SPECIALIST THAT WILL ASSIST IN THE DESIGN OF THESE DISPLAY SYSTEMS.
- ✓ WE CAN LOCATE ELEC OUTLETS AND DATA JACKS THROUGHOUT THE GALLERY
- ✓ THE EXHIBIT SPACE IS SMALL AND WE WILL NEED TO HAVE HIGH CEILINGS.
- ✓ TRAVELING EXHIBITS ACCOMMODATION WILL BE CHALLENGING.



APALACHICOLA, FLORIDA

APALACHICOLA MUSEUM OF AFRICAN AMERICAN CULTURE AND HISTORY | PROGRAM CONCEPTS



rhodes + brito
ARCHITECTS

PROGRAMMING KICK-OFF
MEETING
11.20.2023

APALACHICOLA MUSEUM OF
AFRICAN AMERICAN CULTURE AND HISTORY

THANK YOU!



rhodes + brito
ARCHITECTS